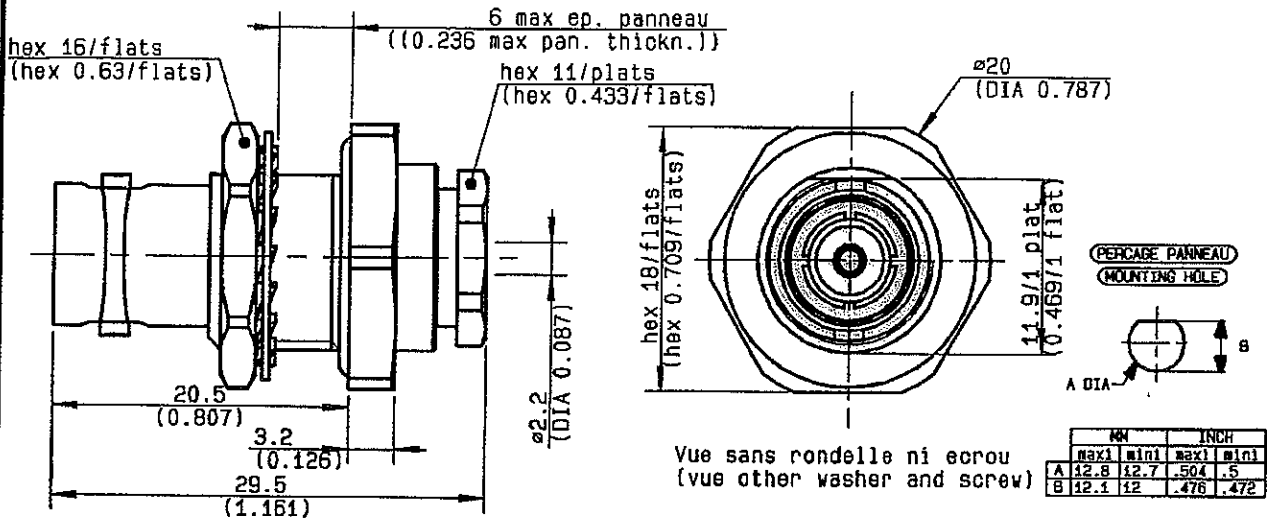


**STRAIGHT BULKHEAD JACK PANEL SEAL  
CABLE 2/50**

**R141.323.003**  
SERIES **BNC**



NOMINAL IMPEDANCE	50	$\Omega$
FREQUENCY RANGE	0-4	GHz
TEMPERATURE RATING	-65/+165	$^{\circ}$ C
V.S.W.R	1.6 +	x F(GHz)Maxi
RF INSERTION LOSS	0.115 $\sqrt{F}$ (GHz)	dB Maxi
VOLTAGE RATING	335	Veff Maxi
DIELECTRIC WITHSTANDING VOLTAGE	1000	Veff Mini
INSULATION RESISTANCE	5000	M $\Omega$ Mini
HERMETIC SEAL	NA	Atm.cm <sup>3</sup> /s
LEAKAGE (pressurized only)	IP65	
MECHANICAL DURABILITY	500	Cycles
WEIGHT	23	gr
SPECIFICATION		

CABLES : KX 21  
RG 178  
RG 178 PVC  
RG 196

OTHERS CHARACTERISTICS

CABLE RETENTION	58	N Mini
CENTER CONTACT RETENTION		
Axial force - mating end	27	N Mini
Axial force - opposite end	27	N Mini
Torque	NA	cm.N Mini
RECOMMENDED TORQUES		
Mating		cm.N
Panel nut	370	cm.N
Clamp nut	450	cm.N

CONNECTOR PARTS:	MATERIALS	FINISH	(all values are given in micrometers)
BODY	BRASS	GOLD 0.5 OVER NICKEL 2	
OUTER CONTACT			
CENTER CONTACT	BERYLLIUM COPPER	GOLD 0.5 OVER NICKEL 2	
INSULATOR	PTFE	-	
GASKET	SILICONE RUBBER	-	
OTHERS PIECES	BRASS	GOLD 0.5 OVER NICKEL 2	

ISSUE  
**0629 B**

CREATION DATE  
**30-SEP-97**

FILE PART-NUMBER  
**97-0624-019**



**RADIALL**®

LELEI

The information given here is subject to change without notice.  
Design changes may be in order to improve the product.

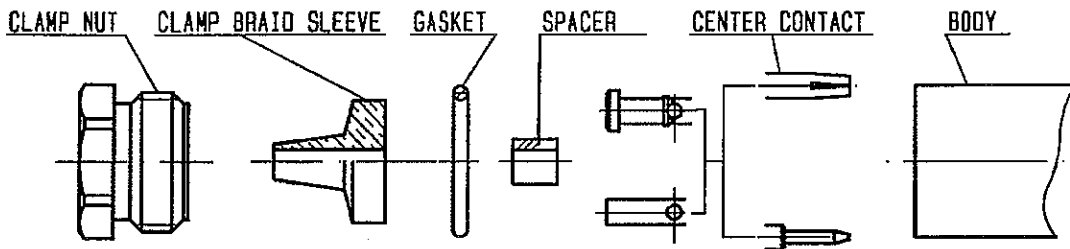
Connect to the future



**RADIALL®**

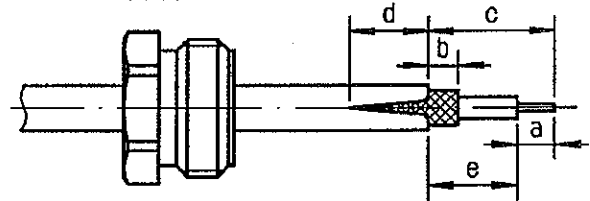
**R141.323.003**

ISSUE 0629 B SERIES BNC



①

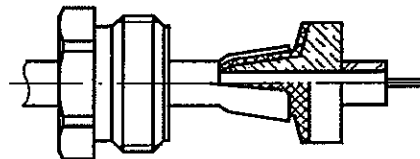
Slide clamp nut onto cable .  
Strip the cable .  
Cut 2 slots in the jacket  
if necessary .  
-



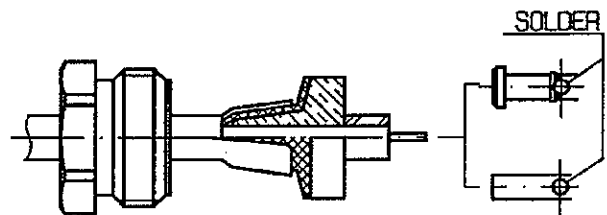
Stripping	a	b	c	d	e
inch	0.157	0.079	0.354	0.118	0.197
mm	4	2	9	3	5

②

Slide the clamp braid sleeve between  
cable dielectric and braid .  
Cut the braid flush with the clamp  
braid sleeve .  
Slide the spacer onto the cable.  
-  
-  
-

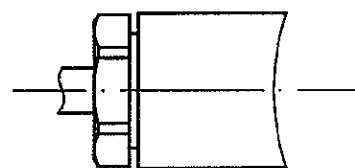


Solder center contact onto cable  
center conductor .  
Slide back nut over clamp assembly.  
-  
-  
-  
-



④

Mount gasket into connector .  
Screw sub-assembly into the connector  
body .  
( recommended coupling torque 450 N.cm )  
39.82 in.lb  
-



Hex. : 11 mm /flats  
Hex. : 0.433inch /flats

LELEU